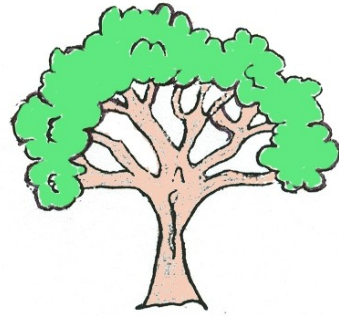


1. SATAN \_\_\_\_\_

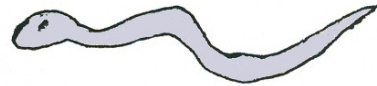
A.



TREE OF KNOWLEDGE  
OF GOOD AND EVIL

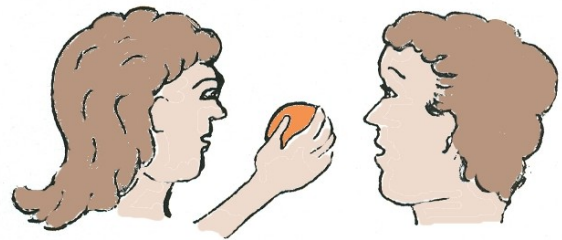
2. TEMPTED BY  
SERPENT \_\_\_\_\_

B.



3. FORBIDDEN \_\_\_\_\_

C.



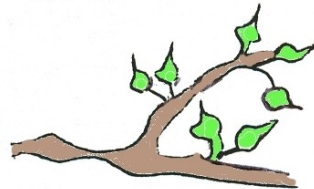
4. GARDEN OF EDEN \_\_\_\_\_

D.



5. GUARDING THE WAY  
TO TREE OF LIFE \_\_\_\_\_

E.



6. FIRST MAN \_\_\_\_\_

F.

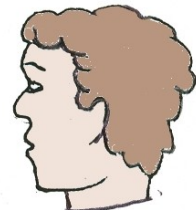
EVE



7. APRONS \_\_\_\_\_

G.

ADAM



8. ADAM BEING  
TEMPTED \_\_\_\_\_

H.

FIG LEAVES

